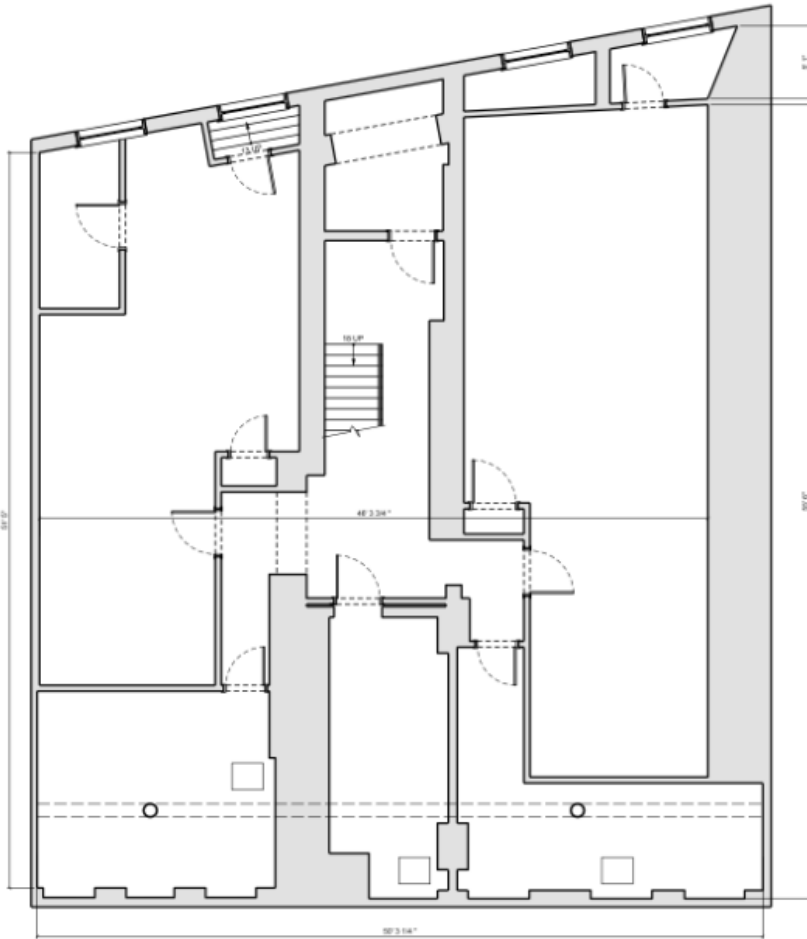
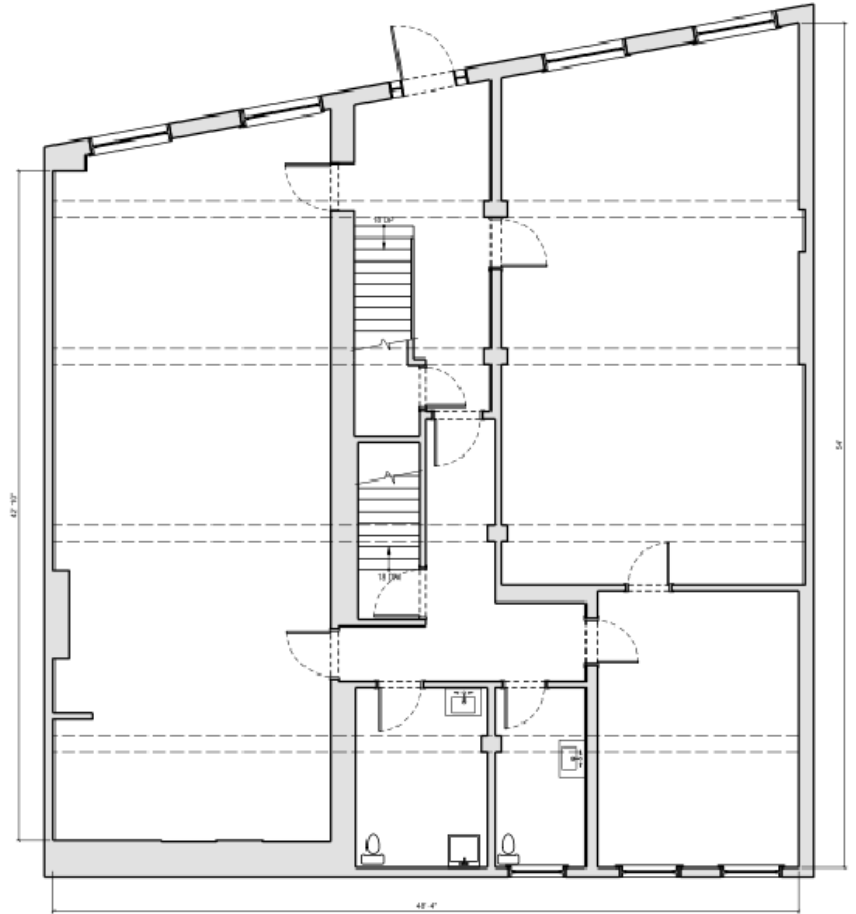


8 N. Preston Street | Philadelphia, PA

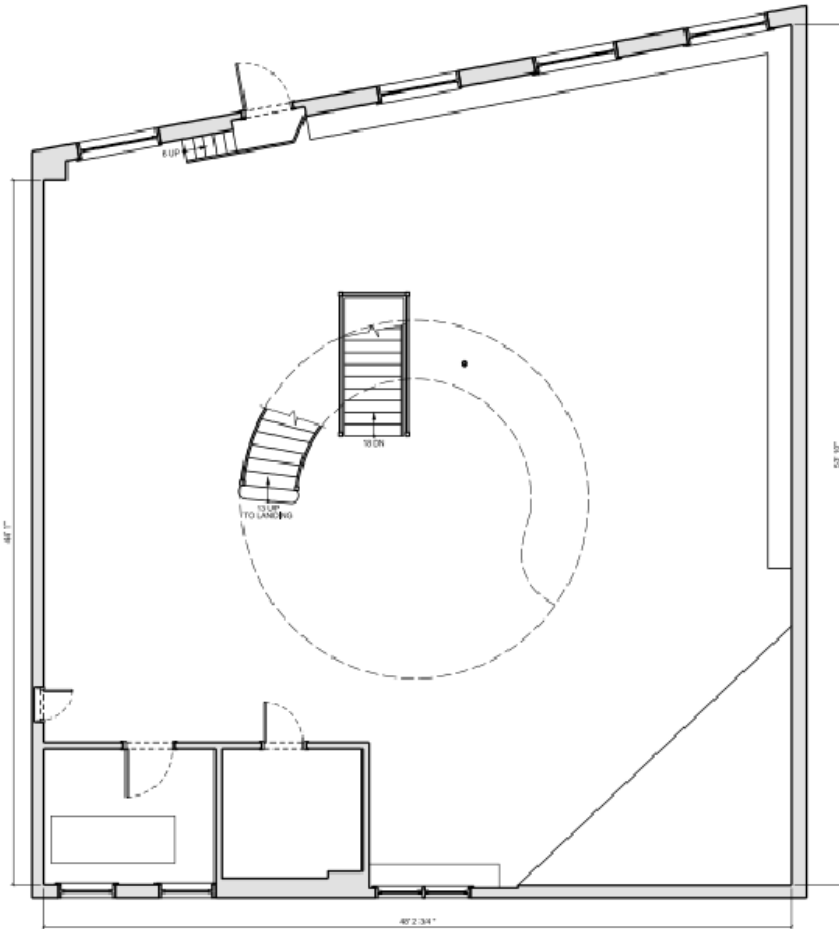


**EXISTING BASEMENT FLOOR PLAN**  
3/16" = 1'-0"

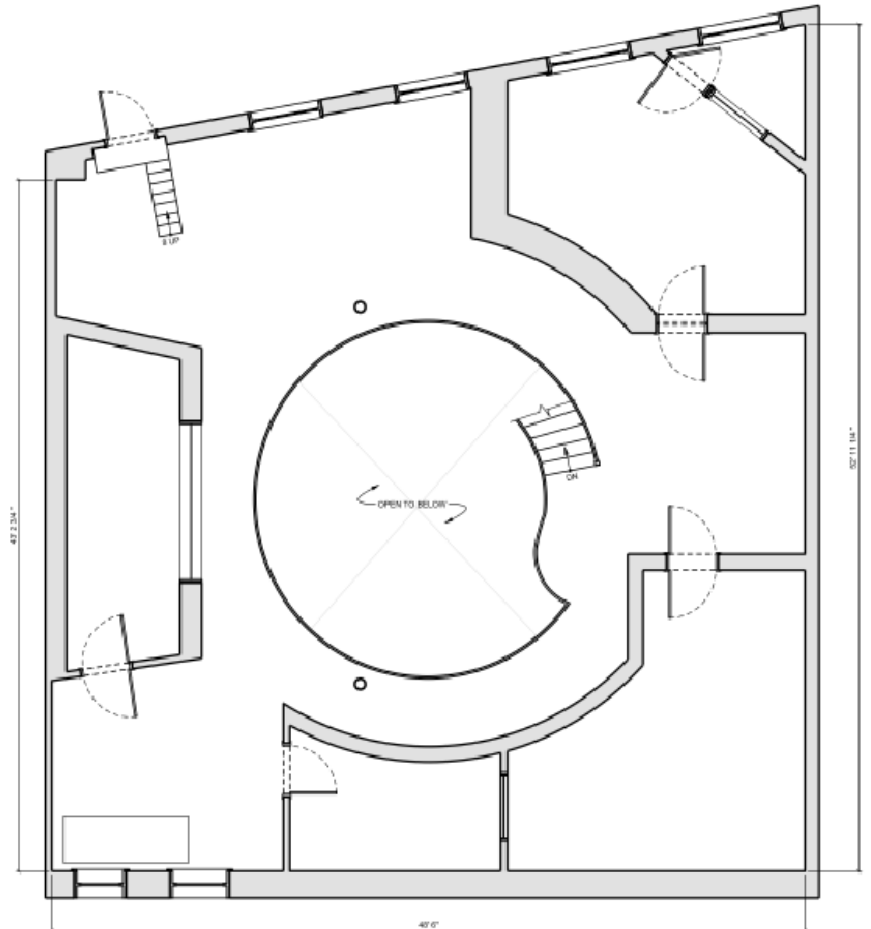


**EXISTING FIRST FLOOR PLAN**  
3/16" = 1'-0"

8 N. Preston Street | Philadelphia, PA



**EXISTING SECOND FLOOR PLAN**  
3/16" = 1'-0"



**EXISTING THIRD FLOOR PLAN**  
3/16" = 1'-0"